

Your Needs Determine our Direction

INCOR's mission is to *provide individualized, quality services to functionally impaired individuals and their families that enhance their self sufficiency, productivity and well being and are consistent with their needs, capacities and preferences.*

Formerly known as SWAP
(Sheltered Work Activity Program),

INCOR has grown to become a multi-service non-profit at the forefront in their seven county service area for providing residential, vocational and recreational services for the developmentally and physically disabled.

INCOR has the experience and reputation of providing quality programs and services that help their clients maintain their dignity, live as independently as possible and share in the American dream. INCOR's clients live, work, and play in our communities and their families and guardians know they can count on **INCOR** to support their needs as well.

Serving the developmentally disabled for more than 25 years



MARC HOMES

Group Home Living for Developmentally Disabled Adults



"Holly House"

Managed by



210 East Okmulgee
Muskogee, OK 74403
918-683-8162
1-888-462-6765

www.incor-ok.com

MARC Homes

Residency Qualifications:

Applicants must be at least 18 years of age and certified for living in a group home for the developmentally disabled by the Oklahoma Department of Human Services, Developmental Disabilities Division. (OKDHS DDSD)

Quality Living

- Every home meets ADA accessibility standards
- Common meals and activities in living/dining area provide family-like atmosphere
- Independent Daily Living Skills taught by qualified staff
- Accessible transportation
- 24 hour staffing
- Personal areas may be furnished by residents
- Laundry facilities on site

Locations:

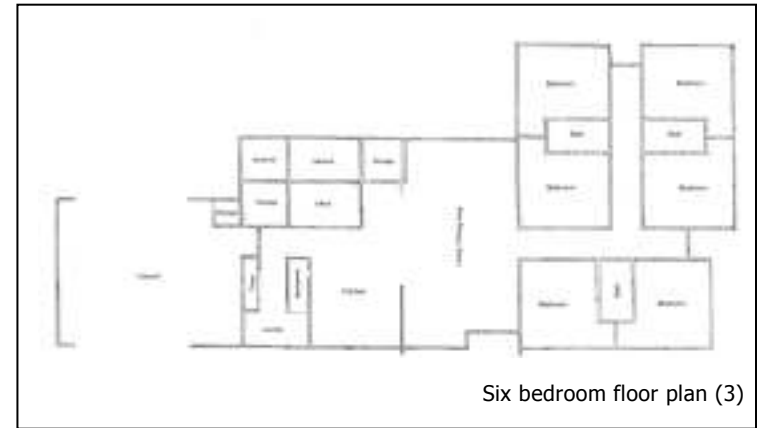
MARC Homes are located in well-established residential areas of Muskogee, OK.

“Evergreen” - 2410 North Washington

“Holly” - 5 Dakota Place

“Magnolia” - 1200 Ellsworth

“Azalea” - 1616 South Utah



Six bedroom floor plan (3)



Four bedroom floor plan (1)